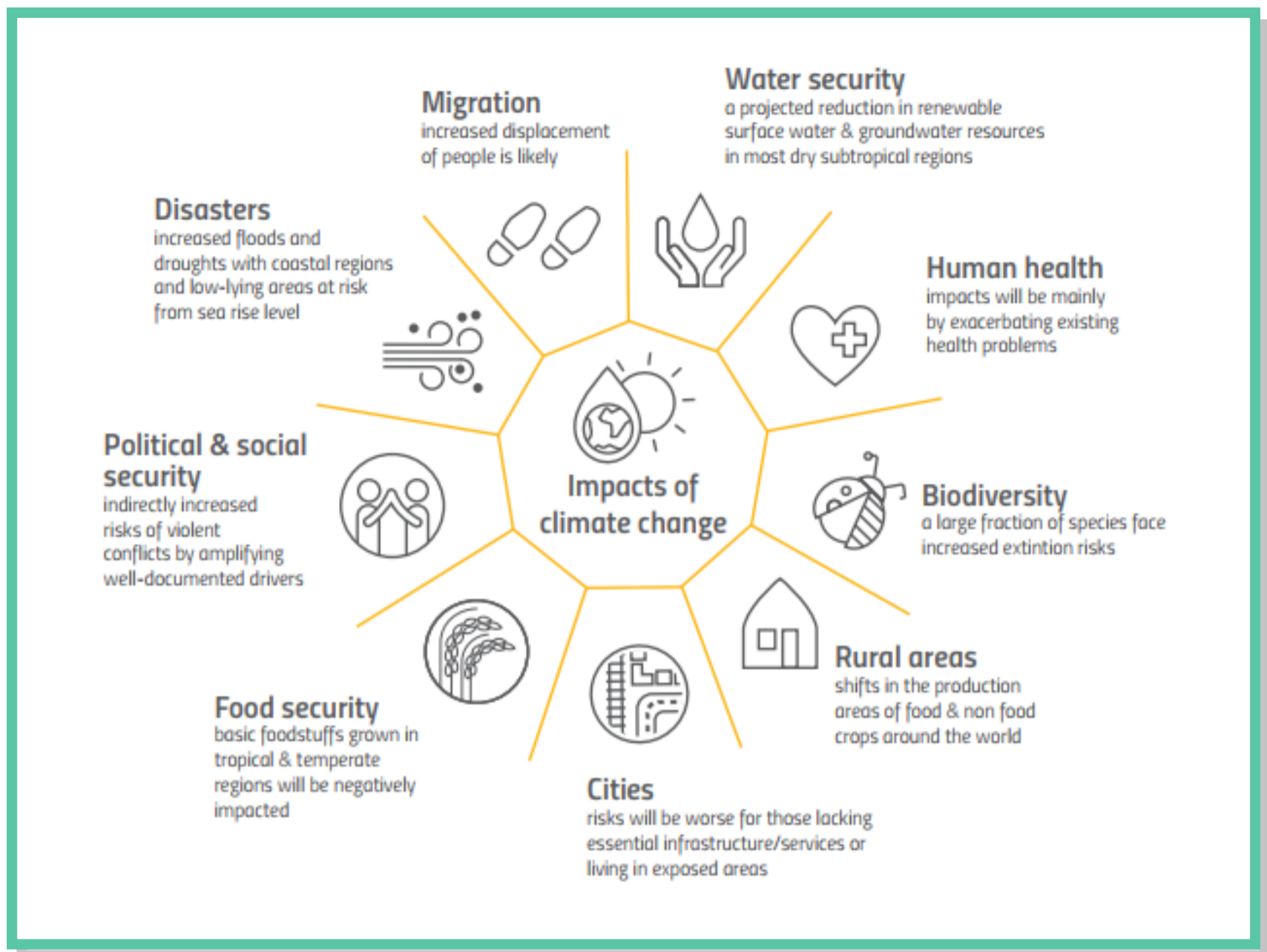
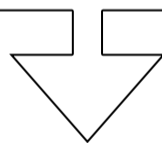


# WHAT ARE THE IMPACTS OF CLIMATE CHANGE?



## HOW CAN SLM HELP?

EMISSION REDUCTION, CLIMATE ADAPTATION AND MITIGATION



### FORESTS

- CARBON STORAGE
- SOIL FERTILITY
- BIODIVERSITY CONSERVATION

### AGRICULTURE

- FOOD SECURITY
- WATER SECURITY
- SOCIAL SECURITY

### SUSTAINABLE LAND USE PLANNING

- RENEWABLE ENERGY
- IMPROVED DISASTER PREPAREDNESS
- HUMAN HEALTH



**United Nations**  
Convention to Combat  
Desertification

**#LoveLand4Climate**